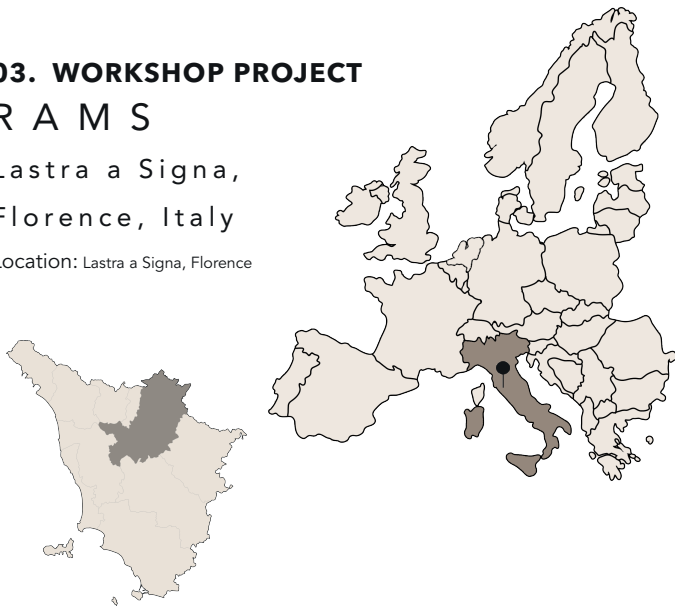


### 03. WORKSHOP PROJECT

## R A M S

Lastra a Signa,  
Florence, Italy

Location: Lastra a Signa, Florence



The project aims to create functional areas that are easily accessible and address the needs of those who occupy them. Therefore, it involves distributing the spaces by dividing the part dedicated to the public from the private areas dedicated to the volunteers of the Misericordia of Lastra a Signa.

The need for recreational spaces for volunteers and guests is immediately apparent while attending the facility. For this reason, a refreshment area with a kitchen, play areas in the outdoor area, and new dormitory zones are proposed.

The current layout of the premises presents significant accessibility issues due to narrow and long corridors. Therefore, the project is also based on removing architectural barriers, making the structure accessible to everyone, and proposing the installation of elevators, which are currently absent.

Furthermore, our proposal also includes spaces dedicated to public functions, as this location is one of the municipality's most central points.

#### HOW IS IT NOW

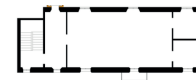
PLAN +0.00



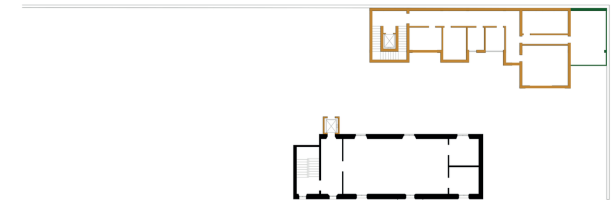
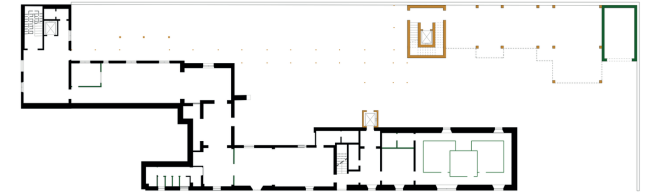
PLAN +3.20



PLAN +6.40



#### HOW IS GOING TO BE IN THE FINAL



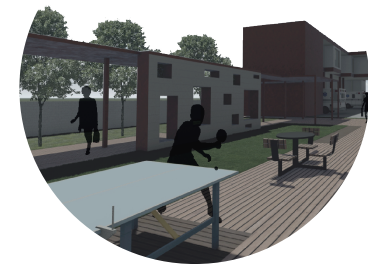
PLAN +0.00



PLAN +3.20

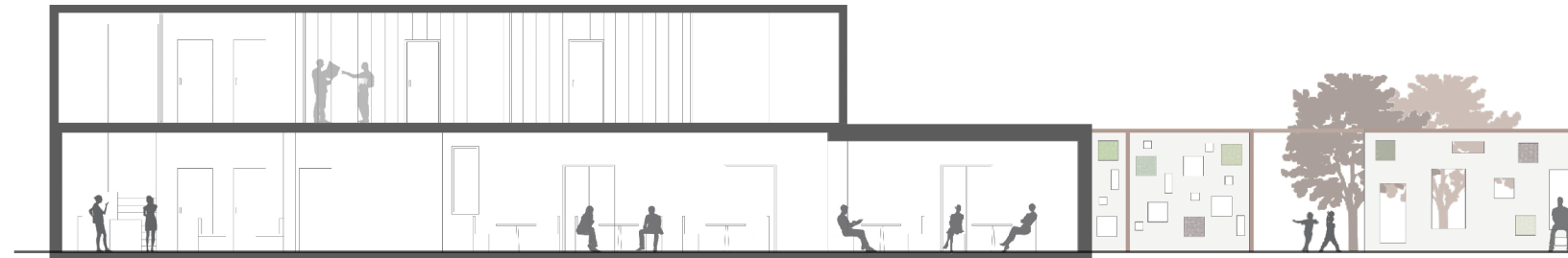


PLAN +6.40





**ELEVATION AA**



**ELEVATION BB**

